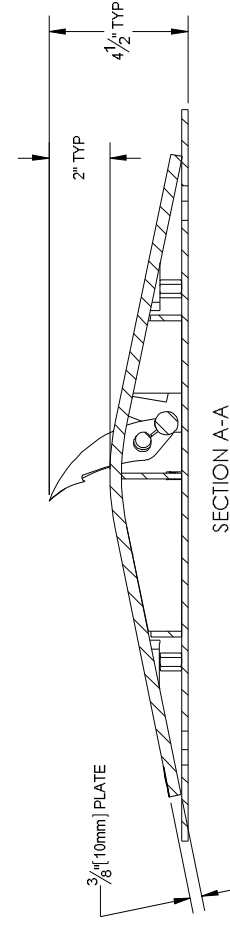
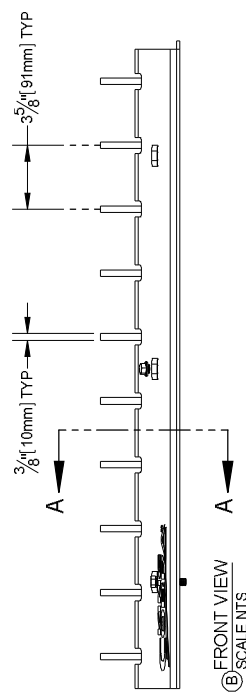
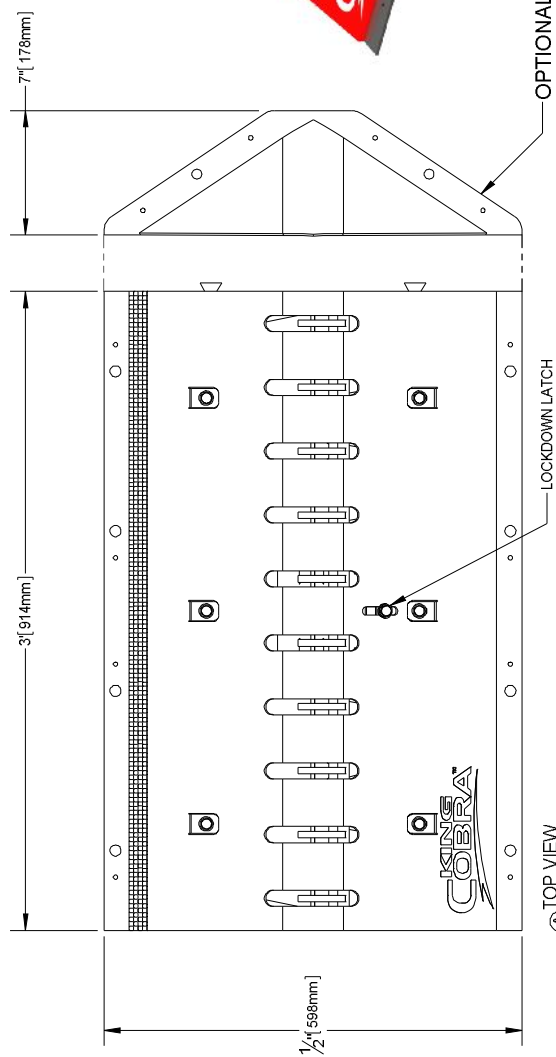
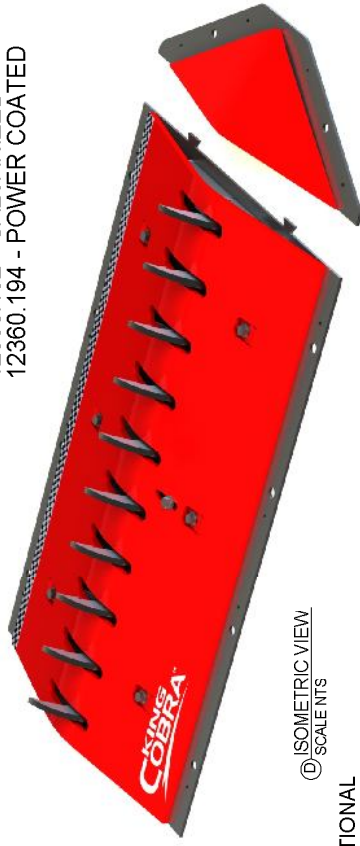


NOTES:
 ALL STEEL CONS TRUCTION
 PART NUMBERS:
 12360.100 - PAINTED
 12360.120 - GALVANIZED
 12360.130 - POWER COATED

OPTIONAL END BEVELS
 SET OF 2
 PART NUMBERS:
 12360.190 - PAINTED
 12360.192 - GALVANIZED
 12360.194 - POWER COATED



<p>Secure Lane www.secure-lane.com sales@secure-lane.com 520.780.9751</p>	<p>COPYRIGHT © 2013 GUARDIAN TRAFFIC SYSTEMS Proprietary Rights are included in all the information disclosed herein. The information is submitted in confidence and neither the document nor the contents shall be reproduced, stored in a retrieval system, or transmitted in any form or by any means, electronic, mechanical, photocopying, recording, or by any other means, without the prior written permission of Guardian Traffic Systems.</p>		<p>UNLESS OTHERWISE SPECIFIED: DIMENSIONS ARE IN INCHES FRACTIONAL DIMENSIONS SHALL BE TO THE NEAREST 1/32" TWO PLACE DECIMAL, 20° UNLESS SPECIFICALLY NOTED</p>	<p>MATERIAL: DO NOT SCALE DRAWING DRAWN: RLS NAME: N/A DATE: 1/11/13</p>	<p>SIZE: B SCALE: N/A</p>	<p>PART NUMBER: 12360 WEIGHT: N/A</p>	<p>REV: - SHEET 1</p>	<p>DESCRIPTION: KING COBRA 3' (914mm) HD SURFACE MOUNT TRAFFIC SECTION</p>
	<p>Secure Lane www.secure-lane.com sales@secure-lane.com 520.780.9751</p>							