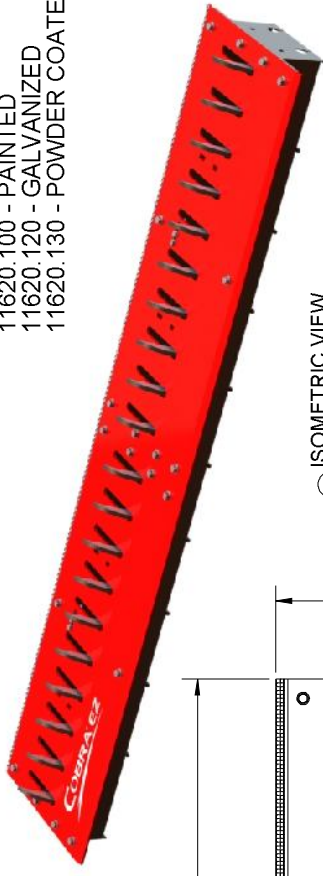
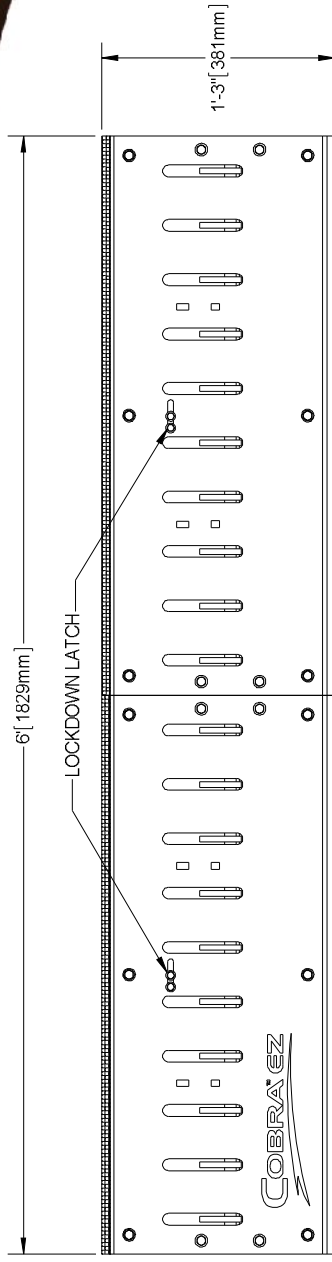


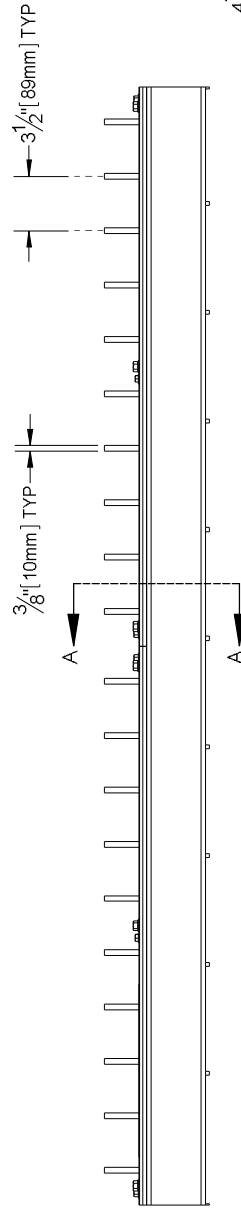
NOTES:
 ALL STEEL CONSTRUCTION
 PART NUMBERS:
 11620.100 - PAINTED
 11620.120 - GALVANIZED
 11620.130 - POWDER COATED



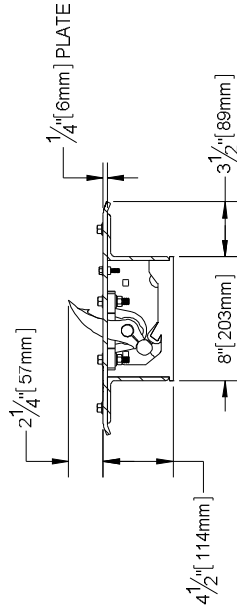
(D) ISOMETRIC VIEW
 SCALE: NTS



(A) TOP VIEW
 SCALE: NTS



(B) FRONT VIEW
 SCALE: NTS



SECTION A-A

(C) SIDE VIEW
 SCALE: NTS

| | | | | | | | | | | | |
|---|---|--|---|---------------|------------------|--------------|-------------------|------------|-----------------------|-----------|--|
| SECURE LANE LLC www.secure-lane.com (520)780-9751 | COPYRIGHT © 2013 GUARDIAN TRAFFIC SYSTEMS <small>Proprietary Rights are included in all the information disclosed herein. The information is submitted in confidence and neither the document nor the drawings shall be used or reproduced in any form without the written permission of Guardian Traffic Systems.</small> | | UNLESS OTHERWISE SPECIFIED: DIMENSIONS ARE IN INCHES FRACTIONAL DIMENSIONS SHALL BE TO TWO DECIMAL PLACES UNLESS OTHERWISE SPECIFIED | | MATERIAL: N/A | NAME: N/A | DATE: 11/14/13 | SIZE: B | PART NUMBER: 11620 | REV: - | DESCRIPTION: CORBA EZ 6' (1829mm) IN-GROUND TRAFFIC SPIKE SECTION |
| | | | DRAWN: RLS | SCALE: N/A | WEIGHT: N/A | SHEET 1 2 | | | | | |

